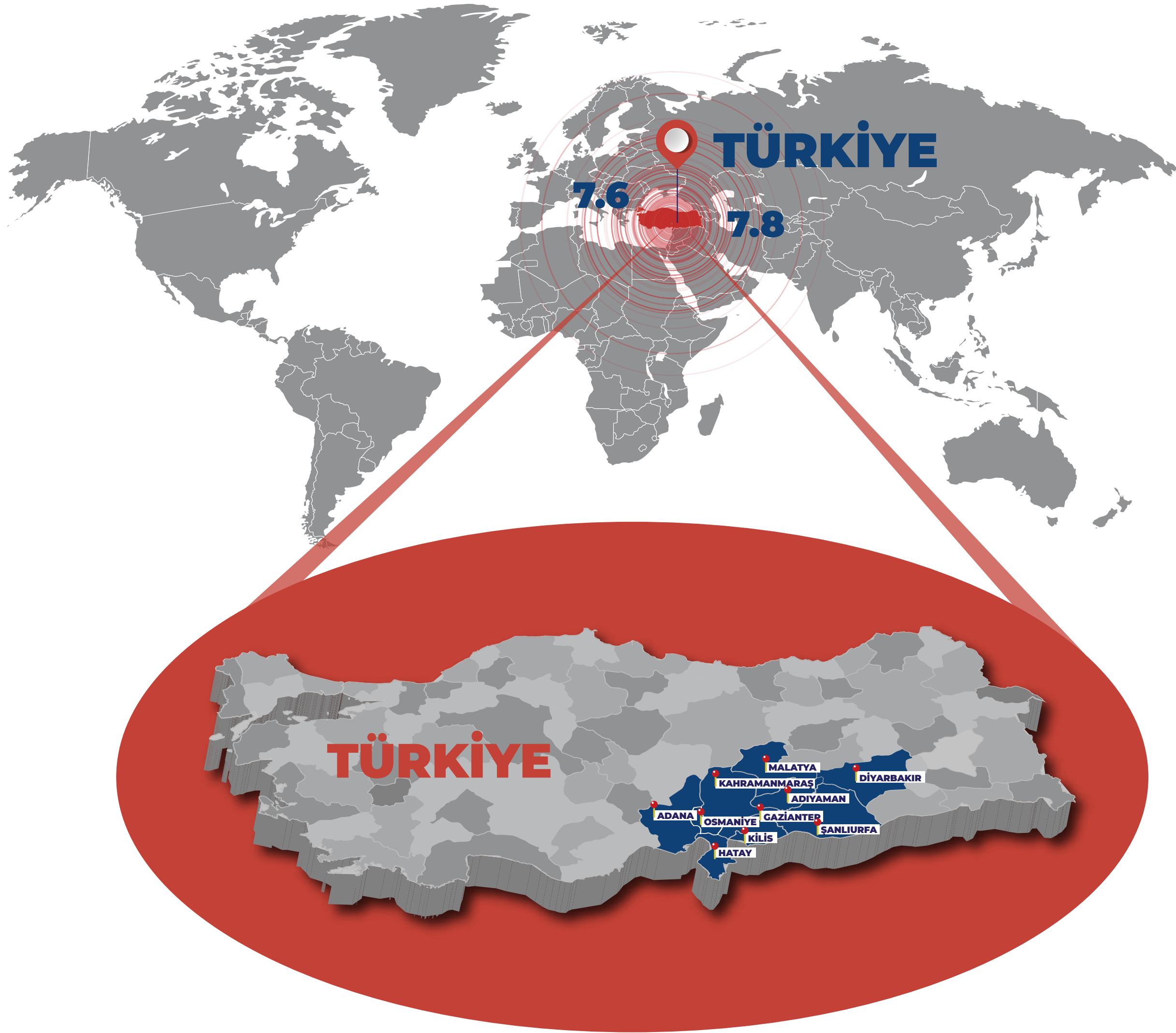


BTF EARTHQUAKE REPORT





It has been six months since twin earthquakes struck Türkiye on February 6, 2023, with magnitudes of 7.6 and 7.8 on the Richter scale. The affected regions included 11 cities in the southeastern part of the country. These devastating earthquakes resulted in the loss of over 50,000 people, leaving many more displaced and struggling to rebuild their lives. The impact of this tragedy has manifested in various ways, including post-traumatic issues, profound financial hardships, and the immense emotional challenge of coping with the loss of loved ones. Despite the passage of time, the affected population continues to struggle with the challenges of such a profound disaster.

For comparison, it is as big as...

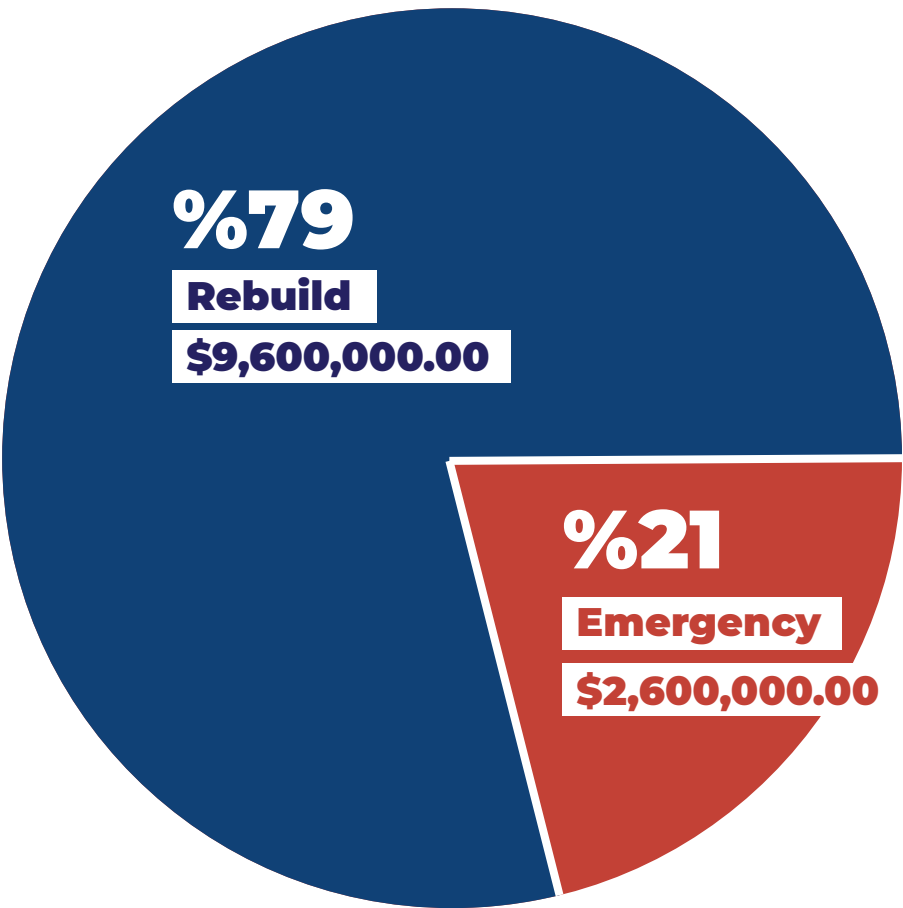


FUNDING



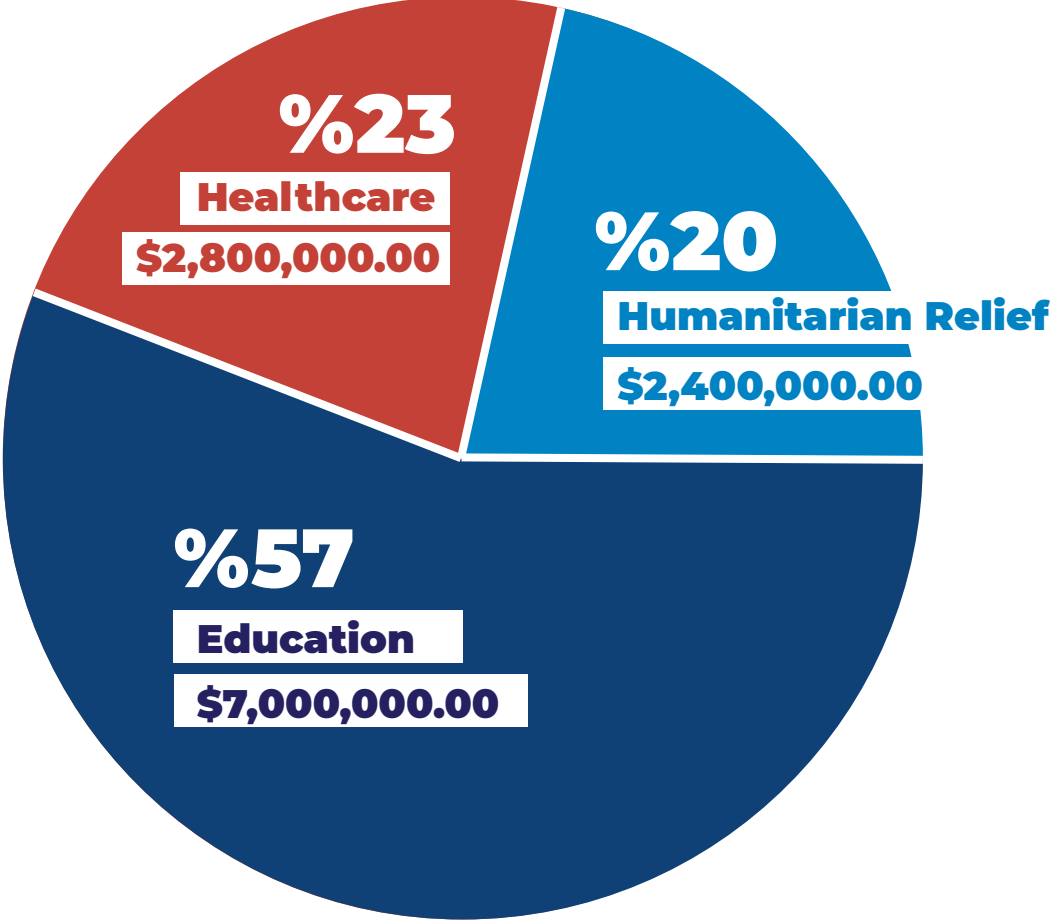
DISASTER RELIEF FUNDS by USAGE

TOTAL: \$12.2M



DISASTER RELIEF FUNDS by PROGRAMS

TOTAL: \$12.2M



TRACKING THE IMPACT: HIGHLIGHTS OF THE RELIEF EFFORTS

EMERGENCY STAGE

- **1334** Large family tents
 - **500** Beds
 - **300** Heaters and stoves
 - **505** Laptops and 45 tablets
 - **174** Mobile toilets
 - **59** Generators
 - **148** Container homes
- **11** Industrial water tanks,
 - **2** Fully functional field kitchens,
 - Hot meals and food packages, hygiene kits and clothing, sleeping bags and blankets were delivered to the earthquake zone.



BTF's immediate response to the urgent needs: \$2,600,000



TRACKING THE IMPACT: HIGHLIGHTS OF THE RELIEF EFFORTS



EMERGENCY STAGE

- **1085** BTF «Hope» scholarships
 - **26** fully-furnished containers
 - **5** School buildings
 - **6** Kindergarten buildings
 - **4** container rehabilitation centers for special care kids
 - **4** rehabilitation centers
- **20** permanent residences for people with disabilities.
 - **2** multifunctional support centers
 - Adaptable youth centers
 - Dialysis machines, water dispensers, BTF's educational kits, pediatric medical support



BTF's immediate response to the urgent needs: \$2,600,000



EMPOWERING RECOVERY



**SHELTER &
DAILY NEEDS**

25,000

Those in need of
shelter and other
essential needs



**HOT MEALS &
FOOD SERVINGS**

2,300,000

People with
nutritional support



**CLOTHING &
HYGIENE KITS**

49,800

Those in need of blankets,
clothes and hygiene kits



**LEARNING
RESOURCES**

5,000

Those in need of learning
environments in which to
continue education



**SCHOLARSHIPS &
EDUCATIONAL SUPPORT**

7,100

Those in need of financial
support to continue their
education via scholarships and
educational tools (laptops, etc)



**PROSTHESES &
SCHOLARSHIPS**

81

Child amputees who require
more long-term educational
supports including scholarship
opportunities



**MENTAL HEALTH
RESOURCES**

7,000

Those in need of mental health
supports and resources
appropriate for
trauma survivors



**OTHER
Over**

200,000

Those in need of healthcare
and financial supports

On February 6, 2023, Bridge to Türkiye Fund (BTF) mobilized an immediate grassroots emergency response to alleviate the devastation in the aftermath of the earthquake. Working hand in hand with supporters, leaders, and partners, BTF formulated a plan integrating four transformative phases.

The initial two phases, called EMERGENCY, focused on addressing urgent needs through humanitarian relief projects.

Two months after the initial phases, BTF began executing phases 3 and 4, known as the REBUILD stage, which centered around sustainable, more permanent projects and needs.

During the execution, BTF supported projects developed by partner institutions and actively facilitated the procurement and delivery of necessary products to the designated areas in need.



TOGETHER BUILDING HAPPINESS



Teacher Mehmet İlter works in Kahramanmaraş, one of the cities hit hardest by the earthquake.



“BTF provided our students in Kahramanmaraş with 504 sets of school bags. I distributed these bag sets to the students residing in the tent cities. I was impressed by the high quality of the products in the bags and the careful consideration given to hygiene materials. Moreover, the inclusion of storybooks that resonated with our children's interests was greatly appreciated. The support from BTF not only ensured our students had essential school supplies but also brought excitement to their lives through engaging reading materials.”

“I want to express my gratitude to BTF and its volunteers. As a teacher who has personally experienced the loss of numerous relatives and friends due to the devastating earthquake, I want to extend my appreciation on behalf of myself, my students, and my entire city. BTF has been a constant source of support, reaching out to us from the beginning of the earthquake, demonstrating genuine concern for our well-being, and assisting us in accessing the necessary aid and assistance. Your unwavering commitment and care have made a meaningful difference in our lives, and we are forever grateful for your presence during this challenging time.”

| | | | | | | | |
|--|--|--|--|--|--|--|---|
|  |  |  |  |  |  |  |  |
|  |  |  |  |  |  |  |  |
|  |  |  |  |  |  |  | |

BTF has expanded its partnerships with trusted organizations to meet the needs of people affected by earthquakes. In order to act quickly in an emergency, we purchased the items needed directly from the supplier and delivered them to the earthquake zone through the appropriate partner to meet the acute needs. By collaborating with these organizations, we have succeeded in delivering your support efficiently and effectively to those affected by the earthquake.

EMERGENCY

Together we provided support for...



Field Kitchens



Tents



Clean Water



Hygiene Kits



**Sleeping Bags,
Blankets**



Water Tanks

REBUILD

Your donations in action...



School Buildings



Tech Support Center



Medical & Essential Support



BTF 4Kids Sets



Kindergarten Projects



Dialysis Center

EMERGENCY STAGE

- Thanks to your support of the BTF Bizim Türkiyemiz Relief Fund, we were able to act quickly during the crucial recovery and protection stages to provide immediate relief in the dramatic aftermath of the earthquake.
- We surveyed the immediate needs and began addressing the most critical areas efficiently and purposefully.
- As part of our response to the tragedy, BTF provided immediate assistance with food, water, and warmth, our guiding principles for this stage in disaster relief. We supplied much needed family tents, container homes, portable sanitation facilities, water tanks, generators, and stoves as part of this stage.



RECOVERY:

Provide immediate assistance with food, water, and warmth during the recovery period.
~ First 10 Days.



PROTECT:

Provide immediate assistance for sheltering with large yurt tents, container homes, portable toilets/showers, water tanks, generators, stoves.
~ First 40 Days.

URGENT NEEDS (SHELTER, FOOD, WARMTH)

PARTNER: AHBAP*



On February 6, we initiated our first transfer of resources to the earthquake zone. We collaborated with our partner, Ahbap, and the following resources were successfully provided in response to the overwhelming need:

- Food packages
- Water
- Blankets
- Medical aid
- 141 Mobile toilets
- 54 Generators
- 87 Container homes
- 299 Tents

*To view the sustainable and rebuild projects we have accomplished in collaboration with AHBAP, please check to pages 26 and 27.

FIELD KITCHEN, HOT MEALS, HYGIENE KITS, FOOD&CLOTHING PACKAGES

PARTNER: TOKTUT



- We established a tent city, consisting of 150 tents, to meet the need for shelter,
- Hundreds of hygiene kits and clothing have been delivered to those affected.
- 2 field kitchens were established to provide hot meals to thousands of survivors for the duration of one month.
- TOKTUT was our collaborator in providing these much needed resources and supports during the first week of the earthquake aftermath.

HOT MEALS, FOOD PACKAGES

PARTNER:
TOPRAKTAN TABAĞA

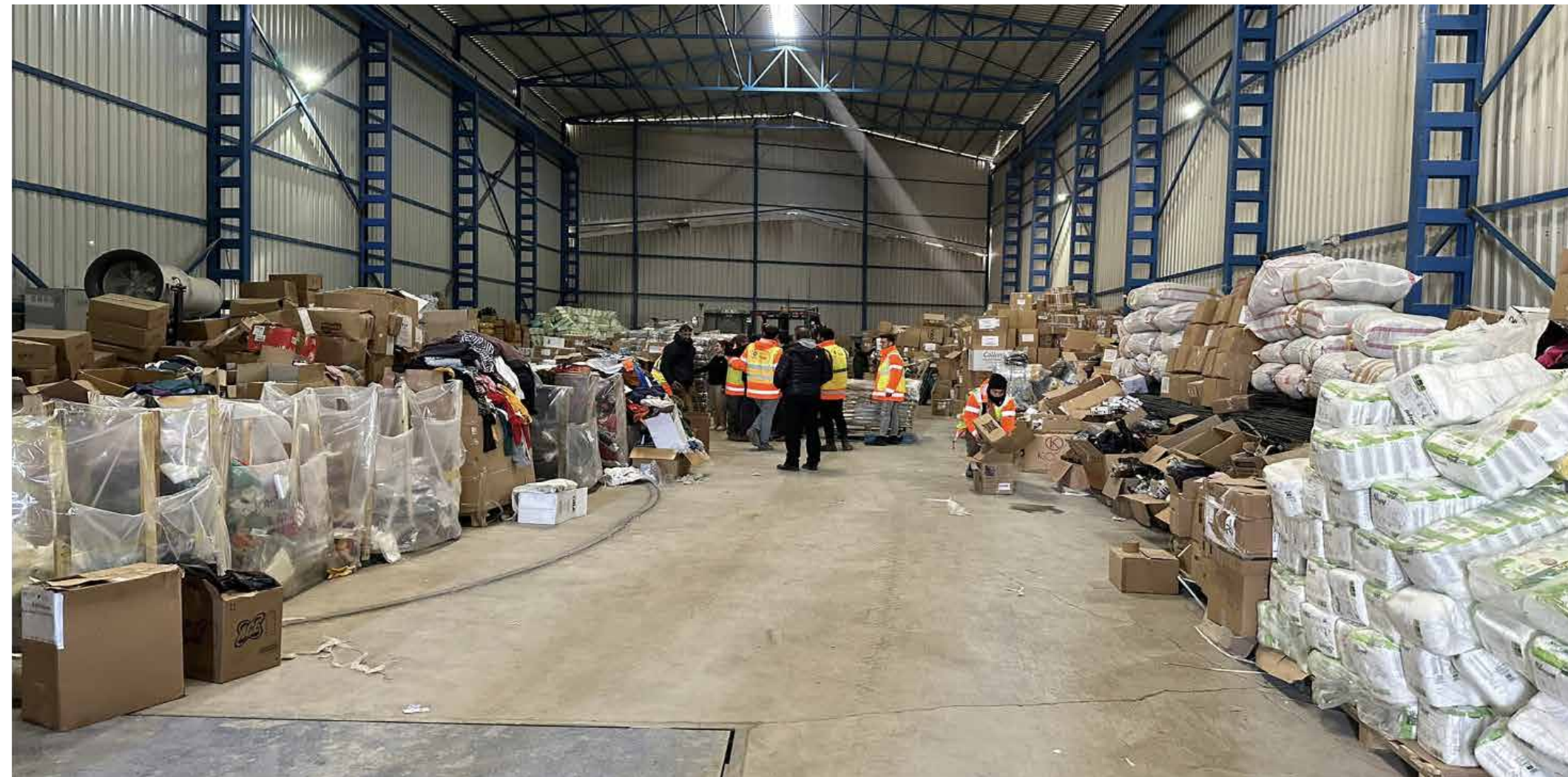


One of our primary focus was meeting the urgent need for hot meals for about a month to the earthquake-affected area and delivering hundreds of food packages to the earthquake survivors.



BABY FOOD, FOOD PACKAGES, WATER TANKS, CONTAINER TOILETS

PARTNER:
İHTİYAÇ HARİTASI



- İhtiyaç Haritası, a partner already on the ground, played a pivotal role in addressing the needs of earthquake survivors, specifically mothers and infants.
- Together, we delivered hundreds of food packages and baby food, 11 industrial water tanks, and 132 container toilets to the earthquake-affected area.

HYGIENE KITS

PARTNER:
LOKMAN HEKİM
SAĞLIK VAKFI



We delivered around **2000 Hygiene kits** prepared for our citizens living in tent cities through Lokman Hekim Sağlık Vakfı.



HYGIENE KITS, BABY FOOD, SLEEPING BAGS, TECHNOLOGY SUPPORT

PARTNER:
**BÜTÜN ÇOCUKLAR BİZİM
DERNEĞİ**



We collaborated with BÇBD in addressing the specific needs of mothers and infants by delivering baby food, hygiene kits, and sleeping bags to the survivors.



We then expanded our reach to supporting students in primary and secondary schools as they transitioned to online learning by supplying tablets and laptops to students.



SHELTER

PARTNER:
ODTÜ MEZUNLAR
DERNEĞİ



To address the shelter needs of earthquake survivors, we collaborated with ODTÜ Mezunları Derneği to facilitate the delivery of 385 weather-resistant tents to the affected area. Our collaborative actions aimed to provide durable and suitable shelter options for those impacted by the earthquake.



SHELTER, MOBILE TOILETS, STOVES, GENERATORS HYGIENE KITS, CLOTHING & TOY PACKAGES

PARTNER: WTECH



The following assistance has been successfully provided in response to the urgent needs:

- **500** Family sized tents
- **20** Mobile toilets
- **100** Stoves
- **3** Generators
- Thousands of hygiene kits, clothing packages, and toys



We aimed to meet a diverse range of needs, from toys to stoves and partnered with WTECH to accomplish this goal.

LOCAL LEADERS



6/28/23



In collaboration with local leaders in Adana and our San Diego Circle, we supplied 23 container houses and 500 mattresses to support the earthquake survivors.

Additionally, we have ensured that 250 portable water filters reached the earthquake zone.

TOGETHER BUILDING HAPPINESS



Teacher from Kahramanmaraş, one of the cities hit hardest by the earthquake.

"The profound impact of the earthquake was felt by our families, students, and loved ones, leaving us grappling with its aftermath. In this trying period, the support extended by BTF proved priceless, particularly for our children. Thanks to BTF, our students had the opportunity to hold a table tennis racket for the first time, among many other enriching experiences made possible through the materials you provided. Additionally, the storybooks sent by BTF amplified the joy in the hearts of my students."



"Every time we receive a package from you, we eagerly unwrap it, filled with anticipation, knowing it holds materials our students have never encountered. Witnessing their curious eyes light up with excitement is a gratifying experience. You have reignited their thirst for knowledge and desire to explore. As a teacher, my utmost gratitude to you for empowering me to nurture enlightened and curious young minds. By fostering a love for learning, you have made an enduring impact on their lives. BTF Family's generosity has truly made a meaningful difference in their lives."

REBUILD STAGE

Our relief efforts were focused on both immediate needs and long-term, sustainable supports. To address the long-term needs of those affected, BTF launched a comprehensive relief effort with sustainability in mind.

We focused on providing support for children's health and well-being, including but not limited to education resources. Our main goal has been to help survivors rebuild new lives with a plethora of supports through more targeted projects to cater to their changing needs.



REBUILD:

Projects to support children's well-being and education as well as rebuilding lives through impactful boutique initiatives.
~ First 6 Months.



SUSTAIN:

Sustainable projects to provide long-term relief.
~ Beyond the first 6 months.

BTF's PROJECT CATE

HELP THE CHILD AMPUTEES OF

TÜRKİYE EARTHQUAKE

Project CATE (Child Amputees of Türkiye Earthquake) supports children who experienced amputation due to the earthquake. We provide orthopedic supports, physical therapy, psychological support, and long-term educational outreach to help them thrive.

With this project, we provided 44 children's prostheses and supported the education of 93 amputees ranging in ages from 0-21 through our scholarship program in the first six months. By year-end, we anticipate the number of children enrolled in this scholarship program to exceed 150.



Give me a hand Be My Superhero!

Support our efforts
for over 500 children
impacted by the
earthquake!

Help these children recover and
empower their future by providing
prosthesis, physical therapy
and long-term education.

With this initiative led by Cukurova
University Faculty of Medicine and
BTF, child amputees receive
age-appropriate orthopedic aids.
BTF will also provide annual
scholarships to support their
long-term educational needs.

100% of proceeds collected
will be donated for the child
survivors of the earthquake.



BTF
BRIDGE TO TÜRKİYE FUND

Bridge to Türkiye Fund is a United Nations Accredited NGO

Project CATE

"Help the Amputee Children of Türkiye Earthquake"

Give me a hand Be My Superhero!

Support our efforts
for over 500 children
impacted by the
earthquake!

Help these children recover and
empower their future by providing
prosthesis, physical therapy
and long-term education.

With this initiative led by Cukurova
University Faculty of Medicine and
BTF, child amputees receive
age-appropriate orthopedic aids.
BTF will also provide annual
scholarships to support their
long-term educational needs.

100% of proceeds collected
will be donated for the child
survivors of the earthquake.



BTF
BRIDGE TO TÜRKİYE FUND

Bridge to Türkiye Fund is a United Nations Accredited NGO

Project CATE

"Help the Amputee Children of Türkiye Earthquake"

We are committed to providing lifelong support to the children under our care within the CATE project. We will continue organizing events and initiatives to ensure ongoing assistance and empowerment for these children.

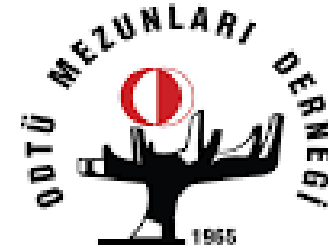
Additionally, we contributed to establishing The Child Wellness Center, research, training, development, and innovation hub dedicated to rehabilitating and caring for amputee children affected by natural and unnatural disasters in Türkiye.

Click here to access a sample event and learn more.

BTF EARTHQUAKE RELIEF SCHOLARSHIP PROGRAMS

BTF "Hope" Scholarships aim to assist K-12 and university students impacted by the earthquake. With the guidance of our circle leaders, our collaborating partners, and our local partners in Türkiye, we supported a total of 1085 students affected by the earthquake.

| Partner | Education Level | of Scholarships |
|--------------------------|-----------------|-----------------|
| TED | K-12 | 150 |
| Nesin Vakfı | K-12 | 150 |
| Ahbap Derneği | University | 150 |
| Koruncuk | K-12 | 50 |
| KAÇUV | K-12 | 15 |
| TÜKD | University | 48 |
| İYTEV | University | 24 |
| BÇBD | University | 8 |
| ODTÜMİST | University | 200 |
| Optima Technic - ODTÜ MD | University | 50 |
| TEV | University | 3 |
| CATE/BCBD | K-U4 | 32 |
| KAHEV | University | 155 |
| KOZA | K-12 | 50 |



BTF'S “BUILDING BRIDGES TO EDUCATION” PROJECT IN HATAY



Responding to the generous requests from donor communities, 26 container classrooms equipped air conditioners have been constructed in Samandağ and Defne.

These learning spaces are equipped with student and teacher desks.

The classrooms also feature whiteboards for enhanced teaching and learning.

The purpose is to create an optimal learning environment in which all students can flourish.

This commitment to expanding educational opportunities underscores our dedication to uplifting the next generation, empowering them with the tools they need to thrive academically and succeed in life. We want them not just to survive, but to thrive.

CONTAINER HOME PROJECTS



We delivered 50 container homes in the earthquake zone, to the earthquake zone, providing shelter for survivors, a project initiated by ATA-NC.

**TOK
TUT**

WATER DISPENSER PROJECTS

PARTNER: TOKTUT

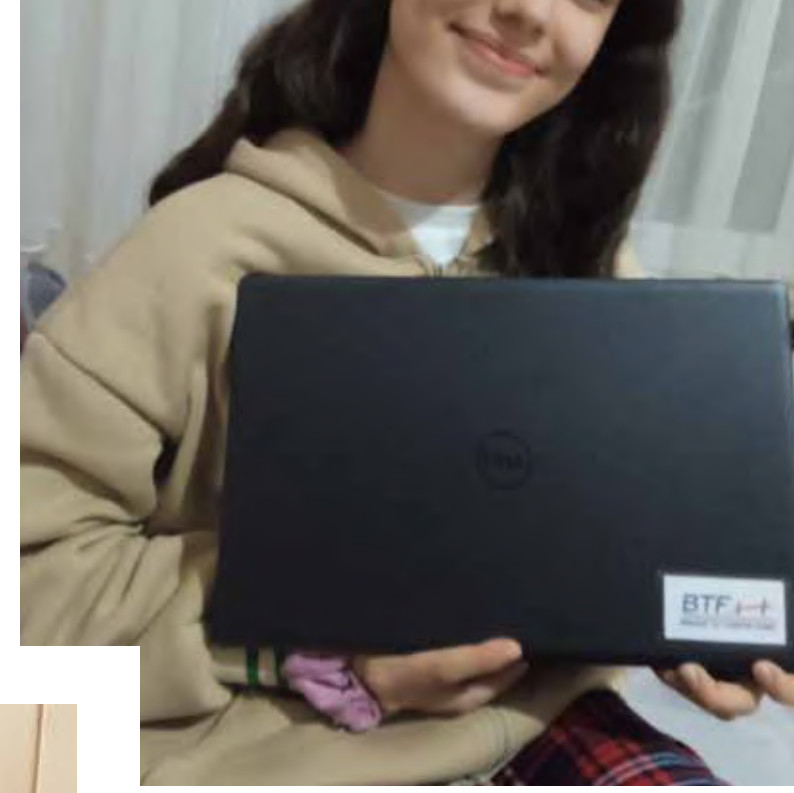


Despite ongoing efforts, earthquake survivors in the affected region still struggle to access safe drinking water.

This project addresses the issue of health access and specifically how approximately 3,000 children may access safe drinking water in all spaces.

By sharing this initiative across six schools, we provide children with the essential resource of clean drinking water.

TECHNOLOGY SUPPORT PROJECT



The earthquake revealed a pressing need for technology supports for students in the wake of the earthquake, as many of their devices were buried under the rubble. This presented significant challenges during the transition to online education in our schools.

To address this issue, we partnered with various organizations to provide 519 students with laptops and 150 students with tablets. These technological resource supported the academic work of students affected by the earthquake, and allowed them to return focus to their education and their school communities.



4KIDS SET DELIVERIES



In our efforts to support uninterrupted education despite the lack of resources in the earthquake-affected area, we have sent 113 BTF4Kids sets to schools. These sets will enable students to continue their education with the necessary tools.



Additionally, we have distributed 2000 bags as April 23 gifts to students impacted by the earthquake. This initiative ensures that these students have access to essential course materials throughout the academic year.



SCHOOL BUILDING PROJECTS

PARTNER: AHBAP

ahbap°



- In a meaningful project for us and the affected students and communities, we partnered with Ahbap to create five school buildings.
- These educational spaces are meticulously crafted with steel-framed foundations, ensuring their durability and structural integrity.
- These visionary schools are set to make a lasting impact in the regions of Adıyaman, Gaziantep (specifically Nurdağı and İslahiye), and Hatay, providing invaluable educational opportunities and

HOUSING PROJECT

PARTNER: AHBAP

ahbap°

We will provide 20 social housing projects to families with children who have disabilities and were affected by the earthquake. Priority will be given to children who have undergone amputations as a result of the earthquake.



These earthquake-resistant steel structures will consist of two-story buildings, with each floor divided into two units. Each house will offer a spacious area of 83 square meters, ensuring comfortable living conditions for the families.

KINDERGARTEN SCHOOL PROJECTS

PARTNER:
ÇOCUKLAR GÜLSÜN DİYE
DERNEĞİ

Çocuklar
Gülsün
Diye

We have begun work on five early education spaces for our youngest learners in the areas affected by the earthquake.

Each kindergarten and early education space is thoughtfully designed as a single-story building, featuring two classrooms, with a total area of 200m2, these spaces have the capacity to accommodate up to 100 students.

Kindergartens in 5 affected cities;

- 📍 Kahramanmaraş (Completed)
- 📍 Adıyaman
- 📍 Osmaniye
- 📍 Malatya
- 📍 Şanlıurfa



CHRONOLOGICAL SOCIAL MEDIA UPDATES: TRACING FOUR MONTHS OF IMPACT

To learn more about the next phases, Phases 3 and 4, we invite you to explore our chronological social media posts. You can access them through the links provided below;

- **First two months**
- **First three months**
- **First four months**

BTF's EARTHQUAKE RELIEF RESPONSE TO DATE

TOTAL IMPACT DELIVERED TO DATE: \$3,385,000

BTF launched a comprehensive relief effort to support affected communities in response to the recent devastating earthquake. Our efforts have been focused on both immediate relief and long-term sustainable solutions.

To ensure the most efficient support to rebuild and sustain affected communities in the aftermath of the earthquake, HERE IS WHAT WE DELIVERED RECENTLY:



Prefabricated School construction in Gaziantep/Nurdağı has been started by Ahbap Derneği



BTF Container Classrooms are ready to install in Hatay – BTF's Direct Support



BTF Kindergarten Container School's construction has been started by Çocuklar Gülsün Diye Derneği



2 Special Education Container Classrooms will be installed and fully furnished – Tohum Otizm Vakfı



Provided six-month support with blood glucose strips and pumps for 320 children in the earthquake-affected region via Diyabetli Çocuklar Vakfı - DİYAÇEV



Provided 271 Digital Shopping Cards for the families of children fighting cancer in the earthquake-affected region via KAÇUV



505 laptops to earthquake-affected students via multiple partners



Provided support to 10 disabled children for their needs of medical supplies, hygiene, psychosocial support and rehabilitation, and 2 containers with equipment and supplies for the rehabilitation center in Hatay via Türkiye Spastik Çocuklar Vakfı - TSÇV



We deeply appreciate your support and are thrilled to share the progress we have achieved thus far.

CONTAINER HOME PROJECTS



We supported 271 children fighting cancer, who were affected by the earthquake, and their families by providing digital shopping cards. These cards empowered them to meet their essential needs during this challenging time.



AZİZ DEDE WORKSHOP, BTF HOPE SCHOLARSHIP PROGRAM

PARTNER: NESİN VAKFI



In the earthquake-affected region, we are organizing a long-term and comprehensive workshop called Aziz Dede Mobile Workshop. This workshop aims to support students' psychosocial development in the aftermath of traumatic experiences.

Furthermore, as part of the BTF Earthquake Relief Scholarship Program, we are addressing the educational needs of 150 K-12 students affected by the earthquake by including them in our scholarship program.

GLUCOSE STRIPS PROJECT

PARTNER:
DİYABETLİ ÇOCUKLAR
VAKFI



In cooperation with the Diabetli Çocuklar Vakfı (DİYAÇEV), we provided blood glucose strips for six months to 320 children with diabetes who were affected by the earthquake.

CONTAINER CLASSROOMS, TECHNOLOGY AND EDUCATIONAL KITS

PARTNER:
TOHUM OTİZM VAKFI



To ensure a safe and inclusive learning environment for children with special needs affected by earthquakes, we have designed 2 special-education container classrooms under BTF's initiative.

In addition, as part of our commitment, we will provide technology kits and educational resources to support 250 children with autism who are earthquake survivors so that they too can thrive.



REHABILITATION CENTERS, SERVICE PACKAGE PROJECTS

We have converted two containers into rehabilitation centers, fully equipped with essential supplies to support those recovering post- earthquake.

Furthermore, we have extended our support through the Service to the Earthquake Victims at the Foundation Center Project. This initiative provides medical products, supportive materials, hygiene products, psychosocial support, rehabilitation services, and transportation assistance to 10 children with disabilities and their families affected by the earthquake.



BTF 
BRIDGE TO TÜRKİYE FUND



BTF 
BRIDGE TO TÜRKİYE FUND

SUPPORT CENTER PROJECT

PARTNER:
TOPLUM GÖNÜLLÜLERİ
VAKFI



This project brings together children and youth from age 6-23 who are suffering the severe affects of post-traumatic stress events such as a natural disaster. Through a variety of activities, workshops, and outreach, the center will help them overcome their challenges and obstacles and give them the tools necessary to move forward. The centers will be inclusive, welcoming spaces in which to feel supported and grow.

We will create each center to be 260 m2, and equipped with three activity rooms, and one seminar/meeting room to help provide the resources needed to learn and thrive.

SUPPORT CENTER PROJECT

PARTNER:
TOPLUM GÖNÜLLÜLERİ
VAKFI

We contributed to the dialysis center established for the needs of earthquake victims in Kahramanmaraş by purchasing 4 dialysis machines with the contributions of ATA - Charlotte Community.



BİRLİKTE GÜZEL PROJECT

PARTNER: UCIM

In the Arsuz district of Hatay, we have provided three containers over a three-month period to support the overall well-being of those affected by this natural disaster. As part of this initiative, 50 women will receive development training aimed at enhancing their social and professional lives, while 50 children aged 0-18 will benefit from psychosocial support to aid in their psychological recovery.





TECH TALENT ACADEMY FOR CHILDREN: TRANSFORMING DISADVANTAGES INTO OPPORTUNITIES PROJECT

PARTNER: WTECH

As part of this Tech Talent Academy Project, we will organize educational activities for 1000 children in Hatay, an earthquake-affected region. On April 23, a special holiday celebration will take place, accompanied by the establishment of a technologically equipped space designed for children and young people aged 2-21.

This dedicated space will offer opportunities for learning and engagement in STEM, R&D, technology, art, sports, and social activities. Our primary goal is to promote holistic development and foster engagement for these 1000 children.



FUNDAMENTAL NEEDS PROJECT

PARTNER: KANSERLE DÂNS

We are committed to providing 6 months of essential support to 20 families with children fighting cancer, who have also been affected by the earthquake.



EMPOWERING WITH EDUCATION PROJECT

PARTNER: BOĞAZİÇİ UMUT DERNEĞİ

Within the scope of Empowering with Education Project of Boğaziçi Umut Derneği, BTF has pledged to construct a 380 m2 special education kindergarten in Iskenderun. This facility will cater to children aged 3-6 with learning differences, providing them with the specialized education they need.

The project aims to offer counseling, guidance, and specialized education services to children and adults residing in tent cities and container campuses.

TOGETHER BUILDING HAPPINESS



Teacher İbrahim Halil works in Şanlıurfa, one of the cities affected by the earthquake.

“In the wake of the earthquake and flood disaster that struck our region, our students were overwhelmed by fear and despair. Despite our best efforts, it didn't seem very easy to uplift their spirits. However, the arrival of the sports equipment and school bag sets sent by BTF brought a wave of happiness among my students. It's heartwarming to witness the transformation on their faces as smiles re-emerge. Your generosity has played a pivotal role in restoring hope and joy to the lives of these resilient young individuals.”



“Your ongoing and remarkable contributions have profoundly impacted addressing the long-term effects of the devastating earthquake and flood disaster, particularly in mitigating the psychological damage inflicted on the affected individuals. I want to express my heartfelt appreciation for your unwavering support in bringing smiles to my students' faces and instilling a renewed sense of self-belief in them. Your assistance has played a crucial role in restoring their confidence and providing them with the hope they need to overcome the challenges they have faced. Words cannot adequately convey my gratitude for your positive influence on their lives.”

CHRONOLOGICAL SOCIAL MEDIA UPDATES: INSIGHTS AND IMPACT WITHIN THE FIRST TWO WEEKS

For a comprehensive understanding of the Phase 1 process, you can access our chronological social media posts through the following links;

- First three days post,
- Day four update,
- Day five update,
- Day eight update,
- Day nine update,
- Day ten update.

BTF's EARTHQUAKE RESPONSE TO DATE

TOTAL IMPACT DELIVERED TO DATE: \$1,250,000

BTF is working with 8 credible partners on the field in 4 phases to deliver your support to 10 cities and their periphery to provide relief. Here is what we delivered immediately over the last two weeks:

FIRST WEEK

- 265 Large family tents
- 10 Mobile toilets
- 1 Fully functional field kitchen with all supplies
- Heaters
- Sleeping bags
- Foods staples



SECOND WEEK

- Container homes (pending)
- 1 Fully functional field kitchen with all supplies
- 300 Heaters and stoves
- 20 Mobile toilets
- 11 Industrial water tanks
- 3 Generators
- Blankets
- Foods staples & Clothing
- Laptops & Tablets (We transferred funds for the technology needs of students affected by the earthquakes as the spring semester started.)
- Installation of mobile toilets & shower units, and industrial water tanks have continued during the week.



PARTNERS

AHBAP Association, ODTÜ Alumni Association, TOKTUT Association, Bütün Çocuklar Bizim Derneği (All Children are Ours Association), İhtiyaç Haritası (Needs Map) Teknolojide Kadın Derneği (Woman in Technology Association), Toprakdan Tabağa (From Soil to Plate), Çağdaş Yaşamı Destekleme Derneği (Association for Supporting Contemporary Life)



 [bridgetoturkiye](https://www.bridgetoturkiye.org)
www.bridgetoturkiye.org

Bridge to Türkiye Fund (BTF) is a charitable non-profit, 501(c)(3) organization, based on democratic citizenry with secular principles, and encourages all to contribute to the welfare of less fortunate children in Türkiye. Contributions made to BTF are tax-deductible to the extent permitted by IRS. BTF's US tax identification number is 58-2678580.

Since the earthquake on February 6, 2023, we have undertaken crucial projects alongside our partners to aid recovery in the affected region. Our commitment to this cause remains unwavering as we continue to collaborate with new partners to further enhance and develop the earthquake zone. Moving forward, our primary focus is on implementing sustainable projects that address the long-term needs of the survivors in the region. With an unwavering dedication, we strive to provide comprehensive support for the well-being, health, and education of our students and other earthquake survivors, ensuring enduring solutions for their benefit.



Thank You!

    **bridgetoturkiye**

www.bridgetoturkiye.org

